




# OFFICIAL HOTEL RATES & DESCRIPTION

AIROPS 2016 - CANNES, FRANCE - OCTOBER 12-13, 2016



# HOW TO USE THE DOCUMENT?

- Click on  in the left-upper corner of the page to access the official hotels list
- Click on the name of the Hotel to access its description
- [Maps](#) are available at the end of the document
- From the maps, click on the numbers to access the hotels' description

# LIST OF OFFICIAL HOTELS BY CATEGORY

## 4\* hotels

- [BEST WESTERN CANNES RIVIERA HOTEL](#)
- [CANBERRA HOTEL](#)
- [CANNES PALACE HOTEL](#)
- [CLARION SUITES CANNES CROISSETTE](#)
- [CLUB MAINTENON](#)

## 3\* hotels

- [COMFORT SUITES CANNES MANDELIEU](#)
- [CITADINES CROISSETTE CANNES](#)

## 2\* hotels

- [B&B CANNES LA BOCCA PLAGE](#)



# LIST OF OFFICIAL HOTELS BY LOCATION

## City Center

- BEST WESTERN CANNES RIVIERA HOTEL
- CANBERRA HOTEL
- CANNES PALACE HOTEL
- CLARION SUITES CANNES CROISSETTE
- CLUB MAINTENON
- CITADINES CROISSETTE CANNES

## Mandelieu – Airport

- COMFORT SUITES CANNES MANDELIEU
- B&B CANNES LA BOCCA PLAGES



# CANBERRA HOTEL – 4★ - CITY CENTER



- **Room Type:**
  - Privilège Room – 20 to 30sqm with bath and 180\*200cm bed or twin rooms with 90\*200 beds
  
- **Facilities:**
  - Restaurant Le Café Blanc and Lounge Bar



Room Type	From October 10 to 14, 2016		Breakfast	City Tax Rate	MAP	Distance to Hangar 16
	SINGLE RATE	DOUBLE RATE				
Privilège Room	EUR 215	EUR 215	EUR 22	EUR 1,60	3	20 min



# BEST WESTERN CANNES RIVIERA HOTEL- 4<sup>★</sup> - CITY CENTER

- **Room Type**

- Standard Room – 20 to 22sqm with bath or shower and 160x190cm bed or two beds of 90\*190 (Twin)

- **Facilities**

- Lounge bar
- Meeting Rooms : 1 meeting room for up to 40 people



Room Type	From October 10 to 14, 2016		Breakfast	Breakfast (pre-reserved)	City Tax Rate	MAP	Driving Distance to Hangar 16
	SINGLE RATE	DOUBLE RATE					
Standard Room	EUR 90	EUR 90	EUR 19	EUR 12,50	EUR 1,60	2	20 minutes by car



# CLARION SUITES CANNES CROISSETTE - 4★ CITY CENTER

- **Room Type**

- Standard Room - 23sqm with bath and 1 double bed or 2 single beds



- **Facilities**

- Room service 24/7
- Meeting Rooms : 2 meeting rooms for a total of 145 sqm of meeting space
- Indoor parking



Room Type	From October 10 to 14, 2016		Breakfast (pre-reserved)	Breakfast	City Tax Rate	MAP	Driving Distance to Hangar 16
	SINGLE RATE	DOUBLE RATE					
Standard Room	EUR 89	EUR 89	EUR 15	EUR 19	1,60 EUR	5	20 min



# CANNES PALACE - 4★ - CITY CENTER

- **Room Type:**

- Classique Room - 22 to 30sqm with bath and 160x190cm bed or 2 90x190cm beds
- Prestige Room – 27 to 48sqm with bath and 2 90x190 cm beds
- Suite Room – 43 to 57sqm with bath and 2 90x190cm beds and 1 sofa bed (140x190cm)

- **Facilities:**

- Bar & Room service
- Meeting Rooms: 9 meeting rooms for a total of 745sqm of meeting space



Room Type	From October 10 to 14, 2016		Breakfast (pre-reserved)	Breakfast	City Tax Rate	MAP	Driving Distance to Hangar 16
	SINGLE RATE	DOUBLE RATE					
Classique Room	EUR 129	EUR 129	EUR 15	EUR 17	1,60 EUR	4	20 min
Prestige Room	EUR 159	EUR 159					
Suite Room	EUR 199	EUR 199					




# COMFORT SUITES CANNES MANDELIEU- 3

- MANDELIEU / AIRPORT

- **Room Type:**
  - Standard Room - 18sqm with shower and 200x90cm bed or twin room with 2 single bed
  
- **Facilities:**
  - Breakfast room
  - Outdoor swimming pool
  - Parking



Room Type	From October 10 to 14, 2016		Breakfast (pre-reserved)	Breakfast	City Tax Rate	MAP	Driving Distance to Palexpo
	SINGLE RATE	DOUBLE RATE					
Standard Room	EUR 59	EUR 59	EUR 8	EUR 8	EUR 1,30		10 min



# CITADINES CROISSETTE CANNES – 3

— CITY CENTER

- **Room Type:**

- Studio double - 23sqm with shower or bath and 1 double bed or 2 single beds with kitchenette
- Apartment – 30 to 35sqm with bath, 1 double bed (or two single beds) with a double sofa bed.

- **Facilities:**

- Entirely renovated
- Bar
- Garden and Solarium




Room Type	From October 10 to 14, 2016		Breakfast (pre-reserved)	Breakfast	City Tax Rate	MAP	Driving Distance to Hangar 16
	SINGLE RATE	DOUBLE RATE					
Studio double	EUR 81	EUR 81	EUR 10	EUR 10	EUR 1,20		20 min
Apartment (up to 4 people)	EUR 107	EUR 107					



# CLUB MAINTENON – 4 - CITY CENTER

- **Room Type:**
  - Standard Room – 35sqm with bath and king size bed (200\*200cm)
  
- **Facilities:**
  - Restaurants & Bars: 1 restaurant and 1 bar
  - Meeting Rooms : 4 meeting rooms for a total of 284sqm of meeting space

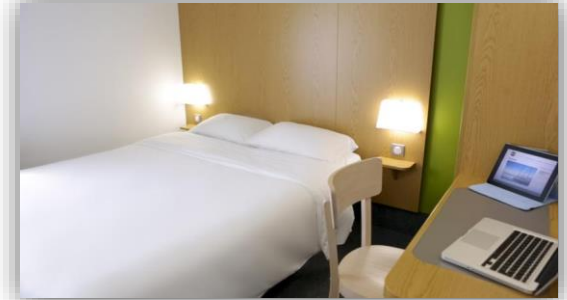


Room Type	October 10 and 14, 2016		October 11, 12 & 13, 2016		Breakfast (pre-reserved)	Breakfast	City Tax Rate	MAP	Driving Distance to Hangar 16
	SINGLE RATE	DOUBLE RATE	SINGLE RATE	DOUBLE RATE					
Standard Room	EUR 99	EUR 99	EUR 124	EUR 124	EUR 10	EUR 13	EUR 1,60		15 min
Superior Room	EUR 113	EUR 113	EUR 138	EUR 138					



# B&B LA BOCCA PLAGE – 2<sup>★</sup> - MANDELIEU

- **Room Type:**
  - Standard double Room – 13sqm with shower and 180\*200cm or 2 single beds of 90cm
  
- **Facilities:**
  - Restaurants & Bars: 0 restaurant and 0 bar
  - Meeting Rooms : N/A

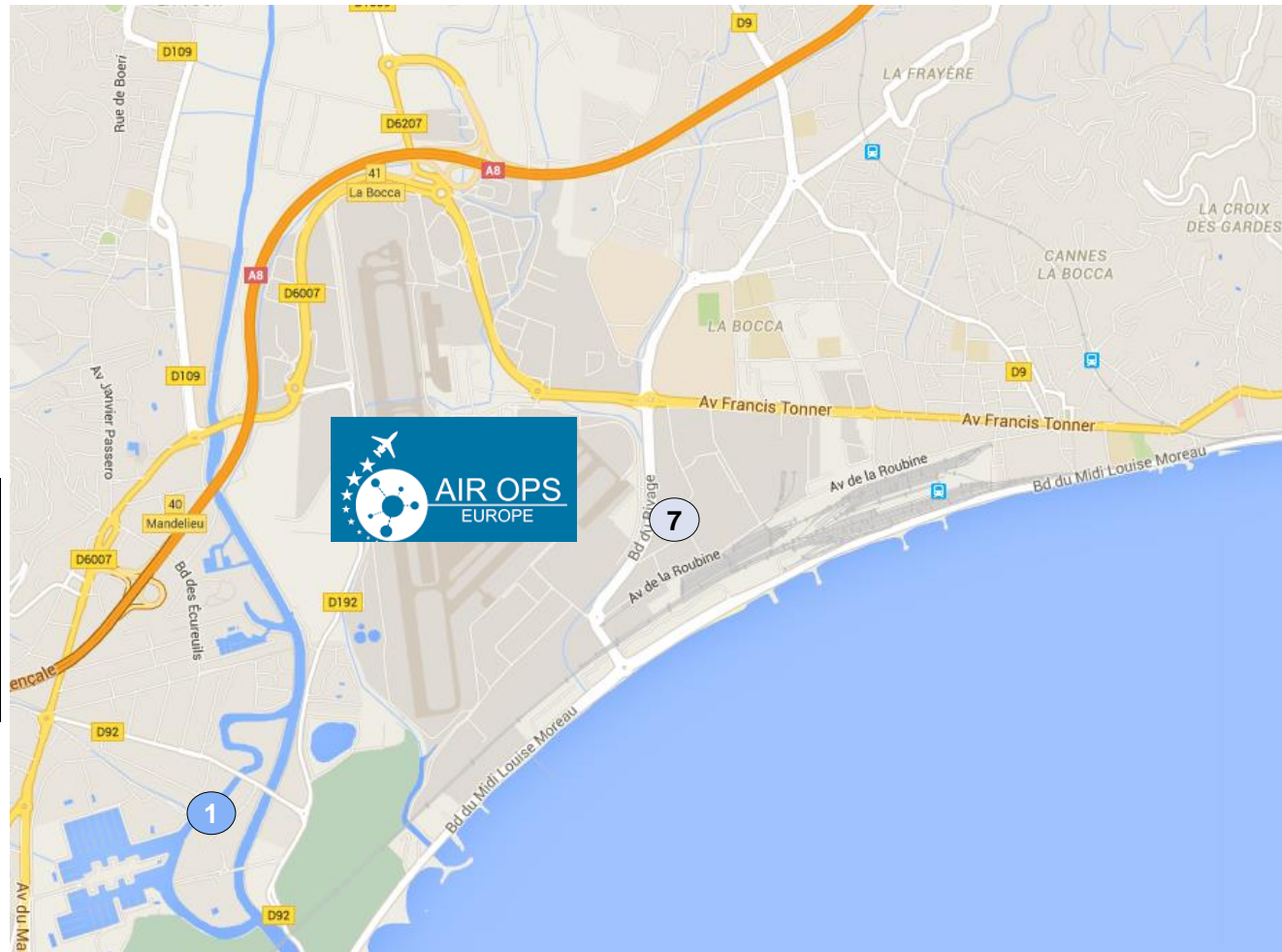


Room Type	October 10 to 14, 2016		Breakfast	City Tax Rate	MAP	Driving Distance to Hangar 16
	SINGLE RATE	DOUBLE RATE				
Standard Room	EUR 69	EUR 69	EUR 6,15	EUR 0,90	7	07 min



# MANDELIEU / AIRPORT

	4 STAR HOTELS
	3 STAR HOTEL
	2 STAR HOTEL

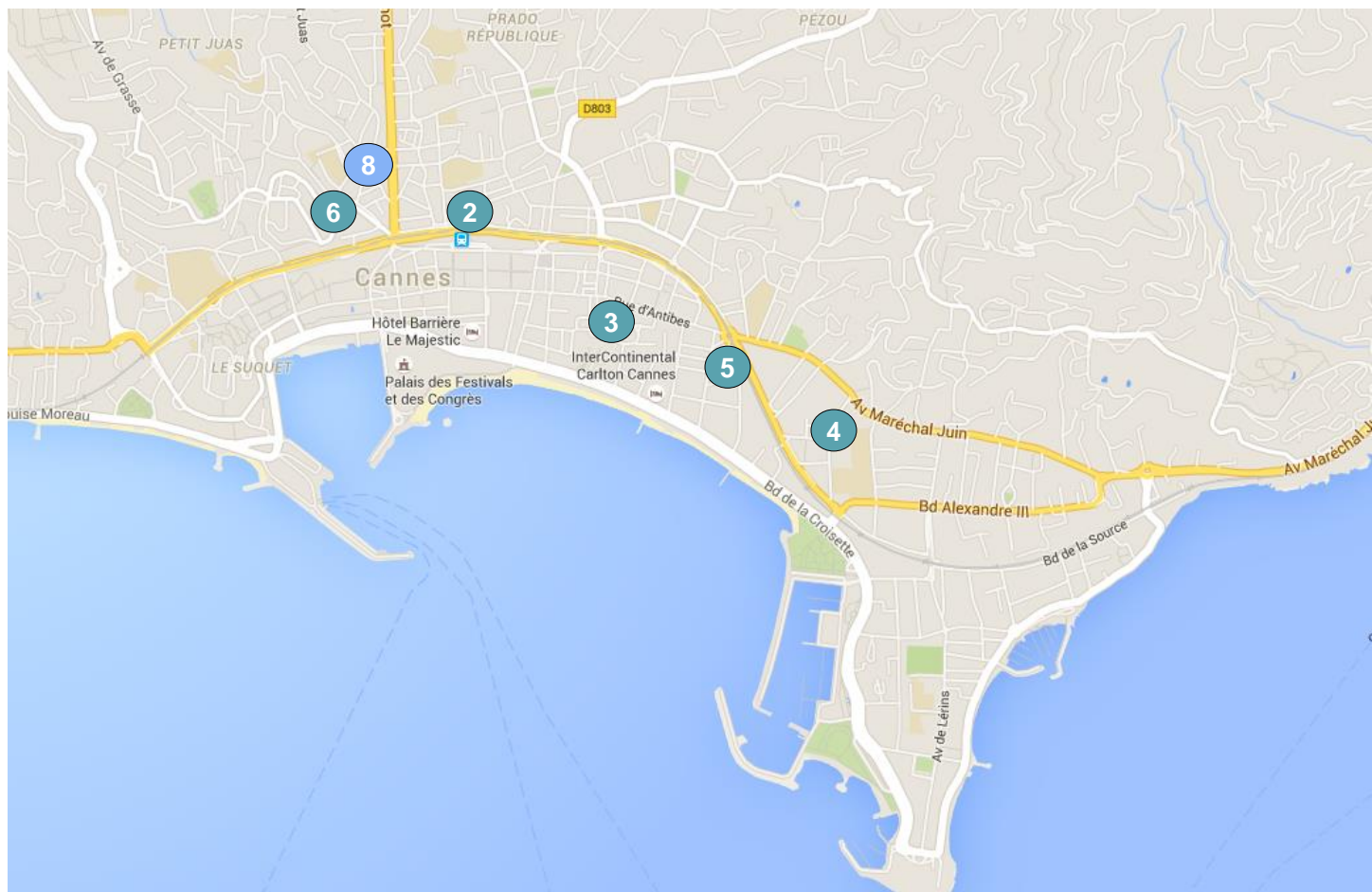


HOTEL NAME	NUMBER ON MAP
COMFORT SUITES CANNES MANDELIEU	1
B&B CANNES LA BOCCA PLAGES	7



# CITY CENTER

	<b>4 STAR HOTELS</b>
	<b>3 STAR HOTEL</b>
	<b>2 STAR HOTEL</b>



HOTEL NAME	NUMBER ON MAP
BEST WESTERN CANNES RIVIERA	2
CANBERRA HOTEL	3
CANNES PALACE	4
CLARION SUITES CANNES CROISSETTE	5
CLUB MAINTENON	6
CITADINES CROISSETTE CANNES	8



# MAP OVERALL

	4 STAR HOTELS
	3 STAR HOTEL
	2 STAR HOTEL

HOTEL NAME	NUMBER ON MAP
COMFORT SUITES CANNES MANDELIEU	1
BEST WESTERN CANNES RIVIERA	2
CANBERRA HOTEL	3
CANNES PALACE	4
CLARION SUITES CANNES CROISSETTE	5
CLUB MAINTENON	6
B&B CANNES LA BOCCA PLAGE	7
CITADINES CROISSETTE CANNES	8

