

Information on Group Hotel Accommodation

Date of Issue: April, 2019

www.itsworldcongress.com



**Join Europe's
biggest event in
Intelligent Transport
Systems and Services**

www.2019.itsineurope.com



13th ITS EUROPEAN CONGRESS
FULFILLING ITS PROMISES

Brainport Eindhoven, the Netherlands | 3-6 June 2019



MCI Amsterdam

We are delighted to be appointed as the official accommodation booking agent for the 13th ITS European Congress and to present this wide range of hotel options to the Congress Supporters.

MCI Amsterdam is one of the leading meeting & event management companies in the Netherlands, offering more than 40 years' experience and the successful track record of over 2000 major meetings and events.

It is our commitment to excellence and our core focus on delivering certainty, innovation and developing rewarding relationships which has enabled us to grow with our clients and provide customised event, conference and housing management solutions wherever their meetings / congresses are being held.

The **MCI Amsterdam Hotel Operations Team** will be happy to help you for hotel accommodation for this event:

MCI Amsterdam

Phone: +31 205754220

Fax: +31 206737306

E-mail: registrations@itsineurope.com

General Information and Definition of Terms

Room rates & Availability

All rates quoted are the lowest available for the most standard room type during the period of the congress. They are payable in EUR and they all include VAT, city tax and breakfast. All taxes are subject to change.



Estimated travel time by car



Estimated travel time by public transportation



Hotel is situated within walking distance to the venue

MCI Amsterdam, the official housing partner for ITS 2019 has reserved a number of rooms in various hotels that have been carefully selected for your convenience. Please note that the hotels listed in this booklet are selected specifically for group reservations.

Make sure to take advantage of these special rates by reserving your rooms in advance. Congress hotels will not accept direct reservations at these negotiated rates.

Individual Terms & Conditions:

Flex reservations

A one night deposit is due to guarantee the room. The rest needs to be paid upon check-out in the hotel.

- Cancellations made until the **3rd of April 2019** will be fully refunded less EUR 50 administration costs
- Cancellations made as of the **4th of April 2019** are non-refundable

A handling fee of EUR 50 per hotel room will be charged for every hotel modification received after the **1st of May 2019**.

Group terms & conditions

Group Payment Conditions

For **group** reservations, the following deposit schedule is applied:

- 30% of the total amount to confirm the reservation
- 50% of the total reservation value by **2nd of February 2019**
- 20% of the total reservation value by **4th of March 2019**
- 100% of the total reservation value should be paid by the **4th of March 2019**

Special requirements (such as double room, twin room, smoking room) concerning the hotel rooms will be available upon request, and cannot be guaranteed. Standard check in time at hotels is between 14.00 and 16.00 hrs and check out times vary from 11:00 to 12:00 hrs.

Should you need guaranteed early arrival before check-in times, or a late departure after the check-out time, the previous or following night is to be reserved and paid.

Payment by bank transfer is strongly recommended. All other payment methods are subject to a 4% service fee excluding applicable VAT. As from **1st of May 2019** only payment per credit card is accepted.

Group Cancellation Conditions

Any enquiries or requests for additional information, modifications or cancellations to room reservations should be addressed to MCI by email (registrations@itsineurope.com). Please do not contact the hotel directly, as they will not accept any changes or cancellations made directly.

Cancellations are calculated on projected charges (per hotel, per night). In case of total or partial cancellation, refunds will be made according to the following schedule (less a 10% handling fee of the total value of the rooms released):

Group Cancellations

- From confirmation until the **2nd of February 2019**
 - 30% of the total cancellation value is non-refundable
- From **3rd of February until the 4th of March 2019**:
 - 80% of the total cancellation value is non-refundable

- From the **5th of March 2019**
 - 100% of the total cancellation value is non-refundable

Modification policy

All changes to / cancellations on the rooming list must be submitted through MCI's online system or sent in writing to MCI. They may never be communicated directly to the hotel. There will be no additional administration fees for modifications in arrival and departure dates or changes, if submitted through our online system before **Wednesday 1st of May, at 23:59 (CEST)**. After this date changes requested from MCI, will be subject to an administration fee of **EUR 50** per change.

Amendments

The information contained herein has been provided by MCI Amsterdam specifically for the ITS 2019 European Congress and is accurate at time of distribution; however MCI Amsterdam reserves the right to update information, rates and list of hotels offered on an ongoing basis. MCI Amsterdam cannot be held responsible for any printing or typing error in this document.

Location Description

The Netherlands

The kingdom of 'The Netherlands', also known as 'Holland' is a delta country in Western Europe where over 17 million people speak the 'Dutch' language. More than one million people live in the capital of Holland called 'Amsterdam'. The five largest cities in the Netherlands are Amsterdam (country's capital), Rotterdam, The Hague, Utrecht and Eindhoven.

There are more than 18 million bicycles in Holland and some 35,000 km of bicycle lanes so that is why the Dutch are the world's cycling leaders.



Eindhoven

Eindhoven, situated in the province of North Brabant in the south of the Netherlands, is the 5th largest city in the country, with over 231.000 inhabitants. Eindhoven is the heart of the Brainport Eindhoven region. Together with Amsterdam (Mainport) and Rotterdam (Seaport) this region is one of the three pillars of the Dutch economy. Eindhoven is the city of Technology, Design and Knowledge. A fascinating combination that make Eindhoven an unconventional and extraordinary place. Here, engineers and creatives work closely together on groundbreaking projects. These crossovers give Eindhoven its exciting energy and make it an international top city for innovation.

Industrial heritage

More than 125 years ago Philips brought light to Eindhoven. The company turned Eindhoven into a vibrant city bursting with innovation, technology and design. Industrial heritage, such as old Philips factories and power stops throughout Eindhoven, has been transformed into trendy shops, exceptional restaurants, luxury lofts and creative workplaces. This transformation is clearly visible in many parts of the city, for example in the districts of Strijp S, T & R.

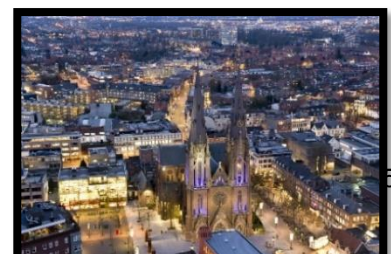
Off the beaten track

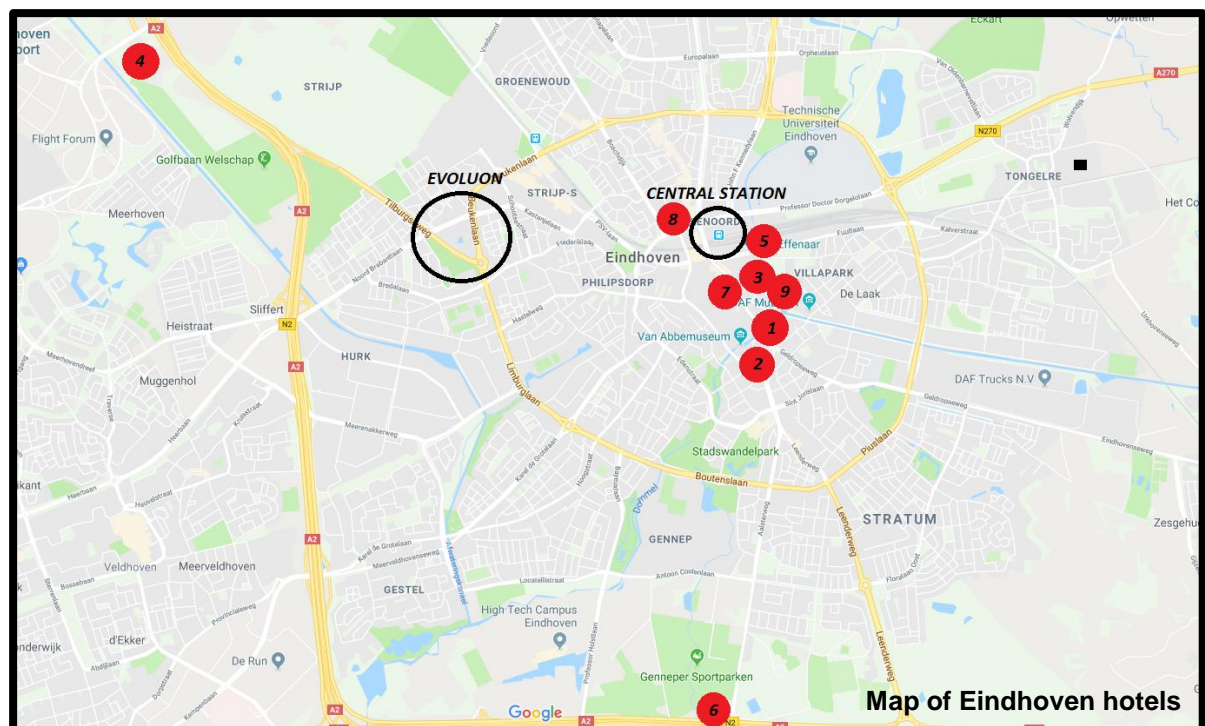
Eindhoven is generally not considered to be the most beautiful city in the world. But Eindhoven definitely is vibrant and exciting. A city off the beaten track, a city that surprises and invites you to explore for yourself.

Dutch Design Capital

Eindhoven is bursting with design. With Design Academy Eindhoven and the world famous Dutch Design Week (DDW) as the largest design event in Northern Europe, Eindhoven can justifiably call itself the design capital of the Netherlands. Discover it for yourself, not only in October during the DDW, but throughout the year with tours, design in the public space and exhibitions in design studios.

Eindhoven is bursting with energy. And glad to share it with you!





List of hotels, by name / number on map

| Number on Map | Hotel Name Groups & Individuals | Classification | Map on Page | Page Hotel Information |
|---------------|------------------------------------|----------------|-------------|------------------------|
| 1 | Park Plaza Eindhoven | ★★★★ | 6 | 7 |
| 2 | Sandton Eindhoven center | ★★★ | 6 | 8 |
| 3 | NH Collection Eindhoven center | ★★★★★ | 6 | 8 |
| 4 | Novotel Eindhoven | ★★★★ | 6 | 9 |
| 5 | The Student hotel Eindhoven | ★★★ | 6 | 9 |
| 6 | Van der Valk hotel Eindhoven | ★★★★ | 6 | 10 |
| 7 | Crown hotel Eindhoven | ★★★★ | 6 | 10 |
| 8 | Holiday Inn Eindhoven | ★★★★ | 6 | 11 |
| 9 | Hotel Pullman Eindhoven Cocagne | ★★★★ | 6 | 11 |

Park Plaza Eindhoven ★★★★★

Address: Geldropseweg 17, 5611 SC Eindhoven

Flex Rate

Single rate

SUPERIOR: **172.50 EUR**

EXECUTIVE: **192.50 EUR**

Double rate

SUPERIOR: **196 EUR**

EXECUTIVE: **216 EUR**



Location on map: #1



25 minutes - Nearby stop: Stadhuisplein (BUS)

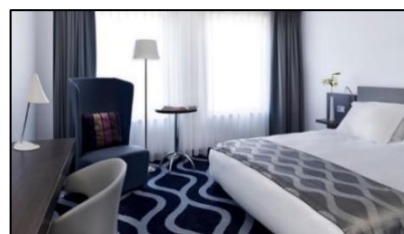


13 minutes by CAR

Meeting rooms: 3

F&B outlets

- Restaurants: 2
- Bars: 2



Sandton Eindhoven center ★★★

Address: Stratumseind 23D, 5611 NA Eindhoven

Flex Rate

Single rate: 152.50 EUR Double rate: 173.50 EUR



Location on map: #2



18 minutes - Nearby stop: Bilderdijklaan (BUS)

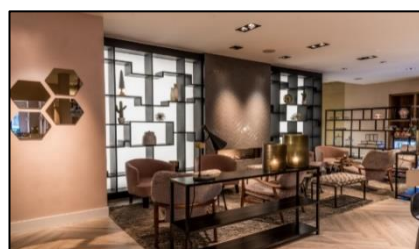
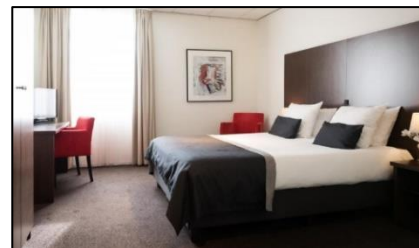


10 minutes by CAR

Meeting rooms: 7 – maximum 80 persons

F&B outlets

- Restaurants: 1
- Bars: 1



NH Collection Eindhoven center ★★★★★

Address: Vestdijk 5, 5611 CA Eindhoven

Flex Rate

Single rate: 188.50 EUR Double rate: 211.90 EUR



Location on map: #3



13 minutes - Nearby stop: Piazza (BUS)



10 minutes by CAR

Meeting rooms: 6 – maximum 160 persons

F&B outlets

- Restaurants: 2
- Bars: 1



Novotel Eindhoven ★★★★★

Address: Anthony Fokkerweg 101, 5657 EJ Eindhoven

Flex Rate

Single rate: 127 EUR

Double rate: 147.50 EUR



Location on map: #4



26 minutes - Nearby stop: Flight Forum (BUS)

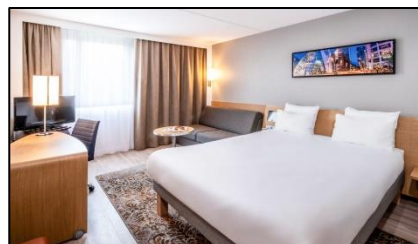


5 minutes by CAR

Meeting rooms: 21 – maximum 100 persons

F&B outlets

- Restaurants: 1
- Bars: 1



The Student hotel Eindhoven ★★★

Address: Stopsweg 1, 5611 AA Eindhoven

Flex Rate

Single rate: 115.50 EUR

Double rate: 131 EUR



Location on map: #5



14 minutes - Nearby stop: Central Stop (BUS)

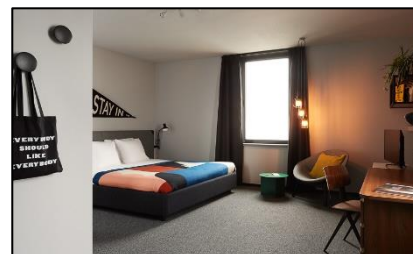


9 minutes by CAR

Meeting rooms: 4

F&B outlets

- Restaurants: 1
- Bars: 2



Van der Valk hotel Eindhoven ★★★★★

Address: Aalsterweg 322, 5644 RL Eindhoven

Flex Rate

Single rate: 128.50 EUR Double rate: 147 EUR



Location on map: #6



30 minutes - Nearby stop: Hotel Eindhoven (BUS)



13 minutes by CAR

Meeting rooms: 22

F&B outlets

- Restaurants: 3
- Bars: 1



Crown hotel Eindhoven ★★★★★

Address: Vestdijk 14-16, 5611 CC Eindhoven

Flex Rate

Single rate

3-5 JUNE: 142.50 EUR

6 JUNE: 132.50 EUR

7 JUNE: 92.50 EUR

Double rate

3-5 JUNE: 161 EUR

6 JUNE: 151 EUR

7 JUNE: 111 EUR



Location on map: #7



13 minutes - Nearby stop: Piazza (BUS)

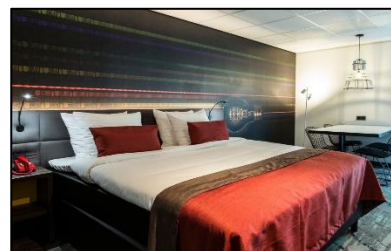


10 minutes by CAR

Meeting rooms: 2

F&B outlets

- Restaurants: 1
- Bars: 1



Holiday Inn Eindhoven ★★★★★

Address: Veldmaarschalk Montgomerylaan 1, 5612 BA Eindhoven

Flex Rate

Single rate

3-5 JUNE: **152.50 EUR**

6 JUNE: **142.50 EUR**

7 JUNE: **92.50 EUR**

Double rate

3-5 JUNE: **171 EUR**

6 JUNE: **161 EUR**

7 JUNE: **111 EUR**



Location on map: #8



15 minutes - Nearby stop: Central stop (BUS)

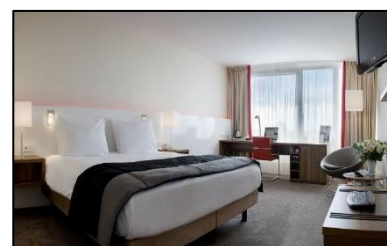


10 minutes by CAR

Meeting rooms: up to 200 people

F&B outlets

- Restaurants: 2
- Bars: 1



Hotel Pullman Eindhoven Cocagne ★★★★★

Address: Vestdijk 47, 5611 CA Eindhoven

Flex Rate

Single rate

CLASSIC TWIN: **149.50 EUR**

SUPERIOR TWIN: **172.50 EUR**

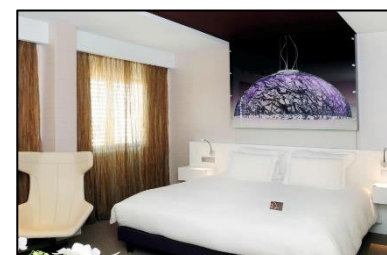
DELUXE QUEEN: **183.50 EUR**

Double rate

CLASSIC TWIN: **170 EUR**

SUPERIOR TWIN: **193 EUR**

DELUXE QUEEN: **204 EUR**



Location on map: #9



22 minutes - Nearby stop: Piazza (BUS)



15 minutes by CAR

Meeting rooms: 18 (up to 400 people)

F&B outlets

- Restaurants: 1
- Bars: 1