




22-24 MAY 2017 | GENEVA

OFFICIAL HOTEL RATES & DESCRIPTION

EBACE 2017 - GENEVA, SWITZERLAND - MAY 22 TO 24, 2017

HOW TO USE THE DOCUMENT?

- Click on  in the left-upper corner of the page to access the official hotels list
- Click on the name of the Hotel to access its description
- Maps are available at the end of the document
- From the maps, click on the numbers to access the hotels' description
- Official EBACE shuttles will be available from most of the hotels. Further information will be provided one month prior the event.

LIST OF OFFICIAL HOTELS BY CATEGORY

5* hotels

- GRAND HOTEL KEMPINKSI
- INTERCONTINENTAL
- LA RÉSERVE
- MOEVENPICK HOTEL & CASINO

4*Sup hotels

- BRISTOL
- EASTWEST
- N'VY MANOTEL
- ROYAL MANOTEL
- STARLING

4* hotels

- APPART'CITY CONFORT GENEVE DIVONNE-LES-BAINS
- AUTEUIL MANOTEL
- CORNAVIN
- CROWNE PLAZA
- DOMAINE DE DIVONNE (FR)
- NH GENEVA AIRPORT
- TIFFANY
- WARWICK

3*Sup hotels

- EDELWEISS MANOTEL
- KIPLING MANOTEL
- LAKE GENEVA HOTEL

3* hotels

- ASTORIA
- BEST WESTERN HOTEL STRASBOURG
- CRISTAL
- GENÈVE AÉROPORT APPART'CITY CONFORT
- HOLIDAY INN EXPRESS GENEVA AIRPORT
- HOSTELLERIE DE LA VENDEE
- LES NATIONS
- RAMADA ENCORE

2* hotels

- LE LIDO

LIST OF OFFICIAL HOTELS BY LOCATION

City Center (Cornavin train station area):

- ASTORIA
- AUTEUIL MANOTEL
- BEST WESTERN HOTEL STRASBOURG
- CORNAVIN
- CRISTAL
- EASTWEST
- EDELWEISS MANOTEL
- GRAND HOTEL KEMPINSKI
- KIPLING MANOTEL
- LE LIDO
- LES NATIONS
- MON REPOS
- N'VY MANOTEL
- ROYAL MANOTEL
- TIFFANY

Airport / Palexpo:

- CROWNE PLAZA
- GENÈVE AÉROPORT APPART'CITY CONFORT
- HOLIDAY INN EXPRESS GENEVA AIRPORT
- INTERCONTINENTAL
- MOVENPICK HOTEL & CASINO
- NH GENEVA AIRPORT
- STARLING

Sub-City:

- DOMAINE DE DIVONNE (FR)
- APPART'CITY CONFORT GENEVE DIVONNE-LES-BAINS
- LA RÉSERVE
- LAKE GENEVA HOTEL
- RAMADA ENCORE
- HOSTELLERIE DE LA VENDEE

GRAND HOTEL KEMPINSKI - 5 - CITY CENTER

• **Room Type:**

- Classic Room – 30sqm with bath and 160x200cm bed (Queen) or two beds of 100x200 (Twin)
- Superior Room – 30sqm with bath and 200x200cm bed (King) partial view on the Lake
- Deluxe Patio – 45sqm with bath and 200x200cm bed (King)
- Deluxe Lake View – 30sqm with bath 200x200cm bed (King) with direct view on the Lake and the Jet d’Eau

• **Facilities:**

- Restaurants & Bars: 3 restaurants and 3 bars
- Meeting Rooms: 13 meeting rooms for a total of 1’780sqm of meeting space

• **Transportation:**

- Closest Bus/Tram stop: Monthoux (Bus 1 then Bus 5)



Room Type	22, 23, 24 & 25 May 2017		19, 20 & 21 May 2017		Breakfast	City Tax Rate	MAP	Distance to Palexpo (public transportation)	Driving Distance to Palexpo
	SINGLE RATE	DOUBLE RATE	SINGLE RATE	DOUBLE RATE					
Classic Room	CHF 560	CHF 560	CHF 460	CHF 460	CHF 50	CHF 4.75	①	20 min	10 min
Superior Room	CHF 635	CHF 635	CHF 540	CHF 540					
Deluxe Patio	CHF 740	CHF 740	CHF 610	CHF 610					
Deluxe Lake view	CHF 1’200	CHF 1’200	CHF 1’070	CHF 1’070					

INTERCONTINENTAL - 5★ - AIRPORT / PALEXPO

- **Room Type**

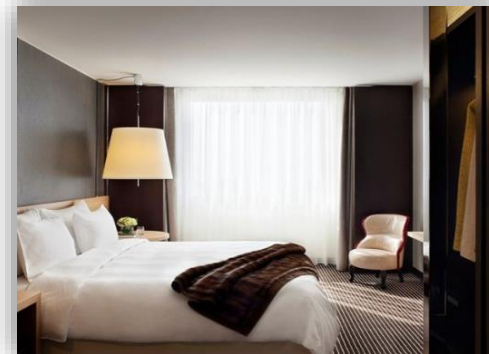
- Superior Room - 25sqm with bath and 180x200cm bed

- **Facilities**

- Restaurants & Bars: 2 Restaurants and 2 Bars
- Meeting Rooms : 16 meeting rooms for a total of 2'000sqm of meeting space

- **Transportation:**

- Closest Bus/Tram stop: Intercontinental



Room Type	22, 23 & 24 May 2017		25 May 2017		19, 20 & 21 May 2017		Breakfast (pre-reserved)	Breakfast	City Tax Rate	MAP	Distance to Palexpo (public transportation)	Driving Distance to Palexpo
	SINGLE RATE	DOUBLE RATE	SINGLE RATE	DOUBLE RATE	SINGLE RATE	DOUBLE RATE						
Superior Room	CHF 520	CHF 520	CHF 430	CHF 430	CHF 320	CHF 320	CHF 35	CHF 46	CHF 4.75	2	7 min	5 min

LA RÉSERVE - 5[★] - SUB CITY

- **Room Type:**
 - Superior Room - 28 to 32sqm with bath and 160x200cm bed
- **Facilities:**
 - Restaurants & Bars: 3 restaurants and 2 bars
 - Meeting Rooms: 6 meeting rooms for a total of 370sqm of meeting space
- **Transportation:**
 - Closest Bus/Tram stop: Les Tuileries (Train 11044 then Bus 5)



Room Type	22, 23 & 24 May 2017		25 May 2017		19, 20 & 21 May 2017		Breakfast	City Tax Rate	MAP	Distance to Palexpo (public transportation)	Driving Distance to Palexpo
	SINGLE RATE	DOUBLE RATE	SINGLE RATE	DOUBLE RATE	SINGLE RATE	DOUBLE RATE					
Superior Room	CHF 565	CHF 565	CHF 525	CHF 525	CHF 475	CHF 475	CHF 45	CHF 4.75	3	15 min	7 min

HOTEL MOVENPICK HOTEL & CASINO - 5

▪ AIRPORT / PALEXPO

- **Room Type:**

- Standard Room - 22sqm with shower and 160x200cm bed

- **Facilities:**

- Restaurants & Bars: 2 restaurants and 1 bar
- Meeting Rooms: 19 meeting rooms for a total of 1'143sqm of meeting space

- **Transportation:**

- Closest Bus/Tram stop: Grand Hangar (Bus Y)



Room Type	22, 23 & 24 May 2017		19, 20, 21 & 25 May 2017		Breakfast (pre-reserved)	Breakfast	City Tax Rate	MAP	Distance to Palexpo (public transportation)	Driving Distance to Palexpo
	SINGLE RATE	DOUBLE RATE	SINGLE RATE	DOUBLE RATE						
Standard Room	CHF 500	CHF 500	CHF 255	CHF 255	CHF 35	CHF 40	CHF 4.75	4	10 min	6 min

BRISTOL – 4★ SUP – CITY CENTER

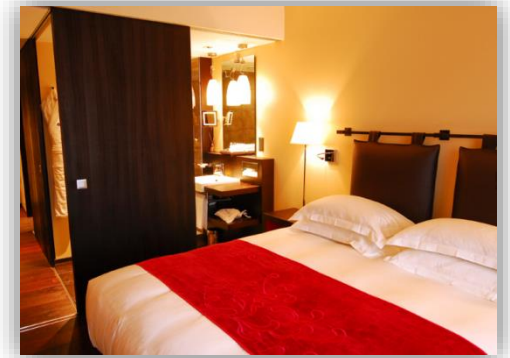
- **Room Type:**
 - Classic Room – 24sqm with bath and 2x100x200cm bed
- **Facilities:**
 - Restaurants & Bars: 1 restaurant and 1 bar
 - Meeting Rooms : 6 meeting rooms for a total of 275sqm of meeting space
- **Transportation:**
 - Closest Bus/Tram stop: Cornavin (Bus 5 or train)



Room Type	22, 23 & 24 May 2017		19, 20 & 21 May 2017		25 May 2017		Breakfast	City Tax Rate	MAP	Distance to Palexpo (public transportation)	Driving Distance to Palexpo
	SINGLE RATE	DOUBLE RATE	SINGLE RATE	DOUBLE RATE	SINGLE RATE	DOUBLE RATE					
Classic Room	CHF 400	CHF 400	CHF 380	CHF 380	CHF 380	CHF 380	CHF 38	CHF 4.00	5	20 min	12 min
Superior Room	CHF 510	CHF 510	CHF 490	CHF 490	CHF 380	CHF 380					

EASTWEST – 4★ SUP – CITY CENTER

- **Room Type:**
 - Standard Room single use only – 20sqm with bath and 140x200cm bed
 - Deluxe Room – 27sqm with bath and 180x200cm bed
- **Facilities:**
 - Restaurants & Bars: 1 restaurant and 1 bar
 - Meeting Rooms : 1 meeting room for a total of 10 people max.
- **Transportation:**
 - Closest Bus/Tram stop: Cornavin (Bus 5 or train)



Room Type	22, 23, 24 & 25 May 2017		19, 20 & 21 May 2017		Breakfast	City Tax Rate	MAP	Distance to Palexpo (public transportation)	Driving Distance to Palexpo
	SINGLE RATE	DOUBLE RATE	SINGLE RATE	DOUBLE RATE					
Standard Room	CHF 425	CHF -	CHF 279	CHF -	CHF 32	CHF 4,00	6	10 min	10 min
Deluxe Room	CHF 495	CHF 495	CHF 355	CHF 355					

N'VY MANOTEL – 4★ SUP – CITY CENTER

• **Room Type:**

- Standard room – from 25sqm with bath and 180x200cm bed
or with walk-in shower and two beds of 090x200cm
- Superior room – from 25sqm with walk-in shower and 180x200cm bed
- Executive room – from 25sqm with bath and 180x200cm bed

• **Facilities:**

- Restaurants & Bars: 2 restaurants and 1 bar (15% discount on your restaurant bill in any Manotel restaurants: Royal Manotel, N'vy Manotel, Edelweiss Manotel)
- Meeting Rooms : 4 meeting space for a total of 345sqm of meeting space

• **Transportation:**

- Closest Bus/Tram stop: Buttini (Tram then Bus 5)



Room Type	21, 22, 23 & 24 May 2017		19, 20 & 25 May 2017		Breakfast	City Tax Rate	MAP	Distance to Palexpo (public transportation)	Driving Distance to Palexpo
	SINGLE RATE	DOUBLE RATE	SINGLE RATE	DOUBLE RATE					
Standard Room	CHF 415	CHF 415	CHF 310	CHF 310					
Superior Room	CHF 465	CHF 465	CHF 340	CHF 340	CHF 30	CHF 4.00	7	15 min	10 min
Executive Room	CHF 540	CHF 540	CHF 395	CHF 395					

ROYAL MANOTEL – 4★ SUP - CITY CENTER

- **Room Type:**

- Classic Room – 20-25sqm with bath or walk-in shower and 160x200cm bed or two beds of 090x200cm
- Superior Room – 20-25sqm with bath or walk-in shower and 160x200cm bed or two beds of 090x200cm
- Executive Room – 35sqm with bath and 210x200cm bed
- Junior Suite – 40- 45sqm with bath and 180x200ccm bed or 210x200cm bed

- **Facilities:**

- Restaurants & Bars: 1 restaurant and 1 bar (15% discount on your restaurant bill in any Manotel restaurants: Royal Manotel, N'vY Manotel, Edelweiss Manotel)
- Meeting Rooms : 4 meeting space for a total of 800sqm of meeting space

- **Transportation:**

- Closest Bus/Tram stop: Môle or Gare Cornavin



Room Type	21 ,22, 23 & 24 May 2017		19, 20 & 25 May 2017		Breakfast	City Tax Rate	MAP	Distance to Palexpo (public transportation)	Driving Distance to Palexpo
	SINGLE RATE	DOUBLE RATE	SINGLE RATE	DOUBLE RATE					
Classic Room	CHF 400	CHF 400	CHF 295	CHF 295	CHF 30	CHF 4.00	8	15 min	9 min
Superior Room	CHF 420	CHF 420	CHF 315	CHF 315					
Executive Room	CHF 505	CHF 505	CHF 345	CHF 345					
Junior Suite	CHF 595	CHF 595	CHF 415	CHF 415					

STARLING – 4★ SUP – AIRPORT / PALEXPO

• **Room Type:**

- Standard Room – from 25sqm with shower and 160x200cm bed
- Superior Room – from 25sqm with bath and separate shower and 160x200cm bed
- Business Suite – from 40sqm with shower and 200x200cm bed
- Junior Suite – 43-82sqm with bath separate shower and 160x200cm bed

• **Facilities:**

- Restaurants & Bars: 2 restaurants 1 bar
- Meeting Rooms : 43 meeting room for a total of 5'500sqm of meeting space

• **Transportation:**

- Closest Bus/Tram stop: Palexpo



Room Type	21,22, 23 May 2017		19, 20 & 24, 25 May 2016		Breakfast	City Tax Rate	MAP	Distance to Palexpo (public transportation)	Driving Distance to Palexpo
	SINGLE RATE	DOUBLE RATE	SINGLE RATE	DOUBLE RATE					
Standard Room	CHF 445	CHF 445	CHF 330	CHF 330	CHF 39	CHF 4.00	9	3 min walking distance	N/A
Superior Room	CHF 505	CHF 505	CHF 360	CHF 360					
Business Suite	CHF 545	CHF 545	CHF 420	CHF 420					
Junior Suite	CHF 595	CHF 595	CHF 470	CHF 470					

APPART'CITY CONFORT GENEVE

DIVONNE-LES-BAINS - 4★ - SUB-CITY

- **Room Type:**
 - Standard Room
 - Superior Room
- **Facilities:**
 - Restaurants & Bars: N/A
 - Meeting Rooms: N/A
- **Transportation:**
 - Closest public transportation stop: Divonne-les-Bains, Perdtemps
 - (Bus 814 then train from Coppet station to Geneva-airport)



Room Type	22, 23, 24 May 2017		19,20,21 & 25 May 2017		Breakfast	City Tax Rate	MAP	Distance to Palexpo (public transportation)	Driving Distance to Palexpo
	SINGLE RATE	DOUBLE RATE	SINGLE RATE	DOUBLE RATE					
Standard Room	EUR 259	EUR 259	EUR 129	EUR 129	EUR 16,00	EUR 2.50	29	30 min	15 min
Superior Room	EUR 299	EUR 299	EUR 169	EUR 169					

AUTEUIL MANOTEL - 4★ - CITY CENTER

- **Room Type:**

- Standard Room - 22sqm with bath and 160x200cm bed

- **Facilities:**

- Restaurants & Bars: 0 restaurant and 1 bar (15% discount on your restaurant bill in any Manotel restaurants: Royal Manotel, N'vY Manotel, Edelweiss Manotel)
- Meeting Rooms : N/A

- **Transportation:**

- Closest Bus/Tram stop: Môle or Gare Cornavin



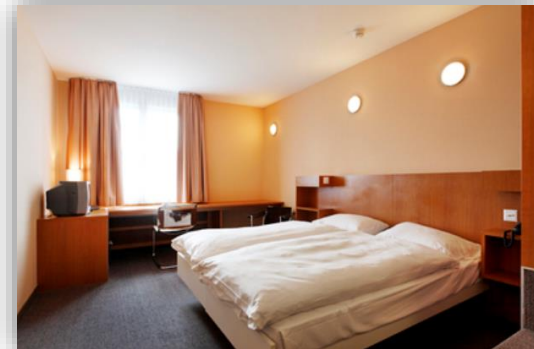
Room Type	21, 22 ,23 & 24 May 2017		19, 20 & 25 May 2017		Breakfast	City Tax Rate	MAP	Distance to Palexpo (public transportation)	Driving Distance to Palexpo
	SINGLE RATE	DOUBLE RATE	SINGLE RATE	DOUBLE RATE					
Standard Room	CHF 335	CHF 335	CHF 250	CHF 250	CHF 28	CHF 4.00	10	15 min	9 min

CORNAVIN - 4★ - CITY CENTER

- **Room Type:**
 - Standard Room - 25sqm with bath and 180x200cm bed

- **Facilities:**
 - Restaurants & Bars:
 - Meeting Rooms : 4 meeting rooms for a total of 153sqm of meeting space

- **Transportation:**
 - Closest Bus/Tram stop: Cornavin



Room Type	22, 23 & 24 May 2017		19, 20, 21 & 25 May 2017		Breakfast	City Tax Rate	MAP	Distance to Palexpo (public transportation)	Driving Distance to Palexpo
	SINGLE RATE	DOUBLE RATE	SINGLE RATE	DOUBLE RATE					
Standard Room	CHF 350	CHF 350	CHF 190	CHF 190	Included	Included	11	15 min	11 min

CROWNE PLAZA – 4[★] - AIRPORT / PALEXPO

- **Room Type:**
 - Standard Room - 28sqm with bath and 160x200cm bed

- **Facilities:**
 - Restaurants & Bars: 1 restaurant and 1 bar
 - Meeting Rooms : 18 meeting rooms for a total of 960sqm of meeting space

- **Transportation:**
 - Closest Bus/Tram stop: De Joinville (Bus 10 then Bus 5)



Room Type	22, 23 & 24 May 2017		25 May 2017		19, 20 & 21 May 2017		Breakfast	Express Breakfast	City Tax Rate	MAP	Distance to Palexpo (public transportation)	Driving Distance to Palexpo
	SINGLE RATE	DOUBLE RATE	SINGLE RATE	DOUBLE RATE	SINGLE RATE	DOUBLE RATE						
Standard Room	CHF 325	CHF 325	CHF 300	CHF 300	CHF 210	CHF 210	CHF 40	-	CHF 4.00	12	15 min	7 min

DOMAINE DE DIVONNE (FR) - 4★ - SUB-CITY

- **Room Type:**

- Standard Comfort Room – 30sqm with bath and 160x200cm bed
- Superior Room – 25sqm with bath and 150x200cm bed

- **Facilities:**

- Restaurants & Bars: 5 restaurants and 3 bars
- Meeting Rooms : 16 meeting rooms for a total of 2110sqm of meeting space

- **Transportation:**

- Closest public transportation stop: Divonne-les-Bains gare (Bus 81413 then train)



Divonne-les-Bains is a spa town situated on the border of Geneva. There is a lively market on Sundays and a succession of cultural and sporting events throughout the year. The town is well provided with recreational facilities including casino, hippodrome, 50m open air swimming pool, golf course, and a 3.3 km path around the Divonne Lake for walkers and cyclists.

Room Type	21, 22, 23, 24 & 25 May 2017		19 & 20 May 2017		Breakfast	City Tax Rate	MAP	Distance to Palexpo (public transportation)	Driving Distance to Palexpo
	SINGLE RATE	DOUBLE RATE	SINGLE RATE	DOUBLE RATE					
Standard Comfort Room	EUR 285	EUR 285	EUR 199	EUR 199	EUR 19,00	EUR 2.48	13	30 min	15 min
Superior Room	EUR 315	EUR 315	EUR 229	EUR 229					

NH GENEVA AIRPORT – 4★ – AIRPORT / PALEXPO

- **Room Type:**

- Standard Room - 15sqm with bath and 140x200cm bed

- **Facilities:**

- Restaurants & Bars: 1 restaurant and 1 bar
- Meeting Rooms : 4 meeting rooms for a total of 280sqm of meeting space

- **Transportation:**

- Closest Bus/Tram stop: Jardin Alpin Vivarium (Tram 14 then bus 5)



Room Type	22, 23 & 24 May 2017		19, 20, 21 & 25 May 2017		Breakfast	City Tax Rate	MAP	Distance to Palexpo (public transportation)	Driving Distance to Palexpo
	SINGLE RATE	DOUBLE RATE	SINGLE RATE	DOUBLE RATE					
Standard Room	CHF 325	CHF 355	CHF 295	CHF 325	CHF 24.00	CHF 4.00	14	25 min	6 min

TIFFANY - 4★ - CITY CENTER

- **Room Type:**

- Single Room– 15-17sqm with large shower and 120x200cm bed
- Standard Room - 19sqm with bath and 160x200cm bed
- Deluxe Room – 22sqm with bath and 160x200cm bed

- **Facilities:**

- Restaurants & Bars: 1 restaurant and 1 bar
- Meeting Rooms : 2 meeting rooms for a total of 120sqm of meeting space

- **Transportation:**

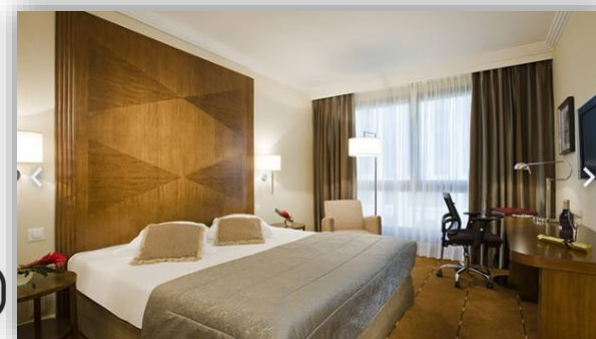
- Closest Bus/Tram stop: Stand (Tram 14 then Bus 5)



Room Type	22, 23, 24 & 25 May 2017		19, 20 & 21 May 2017		Breakfast	City Tax Rate	MAP	Distance to Palexpo (public transportation)	Driving Distance to Palexpo
	SINGLE RATE	DOUBLE RATE	SINGLE RATE	DOUBLE RATE					
Standard Room Single use only	CHF 305	-	CHF 261	-	CHF 29	CHF 4.00	15	20 min	12 min
Standard Room	CHF 420	CHF 420	CHF 274	CHF 274					
Deluxe Room	CHF 490	CHF 490	CHF 350	CHF 350					

WARWICK - 4★ - CITY CENTER

- **Room Type:**
 - Classic Room - 27sqm with bath and 180x200cm bed
- **Facilities:**
 - Restaurants & Bars: 1 restaurant and 1 bar
 - Meeting Rooms : 7 meeting rooms for a total of 550sqm of meeting space
- **Transportation:**
 - Closest Bus/Tram stop: Cornavin



Room Type	19,20 & 25, May 2015		21, 22, 23 & 24 May 2015		Breakfast	City Tax Rate	MAP	Distance to Palexpo (public transportation)	Driving Distance to Palexpo
	SINGLE RATE	DOUBLE RATE	SINGLE RATE	DOUBLE RATE					
Classic Room single use only	CHF 310	N/A	CHF 450	N/A	CHF 30	CHF 4.00	16	20 min	12 min
Classic Room	CHF 330	CHF 330	CHF 460	CHF 460					

EDELWEISS MANOTEL – 3★ SUP- CITY CENTER

- **Room Type:**

- Standard Room - 30sqm with bath and 160x200cm bed



- **Facilities:**

- Restaurants & Bars: 1 restaurant 0 bar (15% discount on your restaurant bill in any Manotel restaurants: Royal Manotel, N'vY Manotel, Edelweiss Manotel)
- Meeting Rooms : N/A

- **Transportation:**

- Closest Bus/Tram stop: Môle (Tram 15 then Bus 5)



Room Type	21, 22 ,23 & 24 May 2017		19, 20 & 25 May 2017		Breakfast	City Tax Rate	MAP	Distance to Palexpo (public transportation)	Driving Distance to Palexpo
	SINGLE RATE	DOUBLE RATE	SINGLE RATE	DOUBLE RATE					
Standard Room	CHF 295	CHF 295	CHF 230	CHF 230	CHF 18	CHF 3.30	17	25 min	10 min

KIPLING MANOTEL - 3[★] SUP - CITY CENTER

- **Room Type:**

- Standard Room - 20sqm with bath and 160x200cm bed

- **Facilities:**

- Restaurants & Bars: 0 restaurant and 1 bar (15% discount on your restaurant bill in any Manotel restaurants: Royal Manotel, N'vY Manotel, Edelweiss Manotel)
- Meeting Rooms : 1 meeting room for a total of 15sqm of meeting space

- **Transportation:**

- Closest Bus/Tram stop: Môle (Tram 15 then Bus 5)



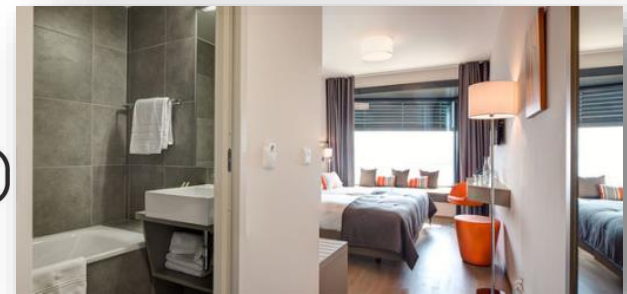
Room Type	21, 22 ,23 & 24 May 2017		19, 20 & 25 May 2017		Breakfast	City Tax Rate	MAP	Distance to Palexpo (public transportation)	Driving Distance to Palexpo
	SINGLE RATE	DOUBLE RATE	SINGLE RATE	DOUBLE RATE					
Standard Room	CHF 295	CHF 295	CHF 230	CHF 230	CHF 18	CHF 3.30	18	20 min	10 min

LAKE GENEVA HOTEL 3[★] SUP – SUB-CITY

- **Room Type:**
 - Superior Room – 26sqm with bath and 180x200cm bed and lake view

- **Facilities:**
 - Restaurants & Bars: 1 restaurant and 1 bar
 - Meeting Rooms : N/A

- **Transportation:**
 - Closest public transportation stop: Versoix train station
 - Free pass for all kinds of public transport in the Canton of Geneva for the duration of your stay



Versoix is a municipality in the Canton of Geneva, right on the shores of Lake Geneva. The town has many shops, restaurants and activities, such as boat trips, the Favarger chocolate and cocoa factory,...

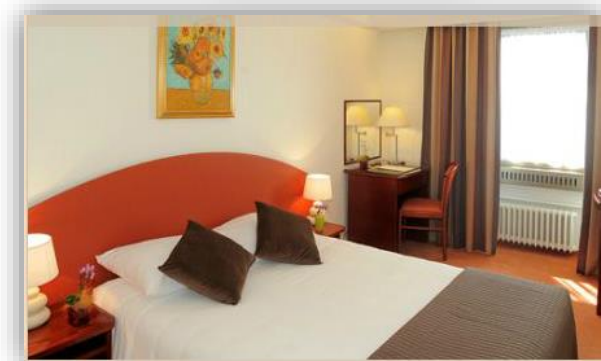
Room Type	22, 23 & 24 May 2017		25 May 2017		19, 20 & 21 May 2017		Breakfast	City Tax Rate	MAP	Distance to Palexpo (public transportation)	Driving Distance to Palexpo
	SINGLE RATE	DOUBLE RATE	SINGLE RATE	DOUBLE RATE	SINGLE RATE	DOUBLE RATE					
Superior Room	CHF 295	CHF 295	CHF 165	CHF 165	CHF 135	CHF 135	CHF 24	CHF 3.30	19	35 min	8 min

ASTORIA - 3★ - CITY CENTER

- **Room Type:**
 - Standard Room - 28sqm with bath and 160x200cm bed

- **Facilities:**
 - Restaurants & Bars: 0 restaurant and 1 bar
 - Meeting Rooms : N/A

- **Transportation:**
 - Closest Bus/Tram stop: Cornavin (Bus 5 or train)



Room Type	22, 23, & 24 May 2017		25 May 2017		19, 20 & 21 May 2017		Breakfast	City Tax Rate	MAP	Distance to Palexpo (public transportation)	Driving Distance to Palexpo
	SINGLE RATE	DOUBLE RATE	SINGLE RATE	DOUBLE RATE	SINGLE RATE	DOUBLE RATE					
Standard Room	CHF 270	CHF 330	CHF 215	CHF 255	CHF 160	CHF 200	Included	CHF 3.30	27	15 min	10 min

BEST WESTERN HOTEL STRASBOURG - 3[★] - CITY CENTER

- **Room Type:**

- Standard Room - 18sqm with bath and 160x200cm bed

- **Facilities:**

- Restaurants & Bars: 0 restaurant and 1 bar
- Meeting Rooms : 1 meeting room for a total of 60sqm meeting space

- **Transportation:**

- Closest Bus/Tram stop: Cornavin (Bus 5 or train)



Room Type	19 to 26 May 2017		Breakfast	City Tax Rate	MAP	Distance to Palexpo (public transportation)	Driving Distance to Palexpo
	SINGLE RATE	DOUBLE RATE					
Standard Room	CHF 270	CHF 290	Included	Included	23	10 min	10 min

CRISTAL - 3[★] - CITY CENTER

- **Room Type:**
 - Standard Room - 28sqm with bath and 160x200cm bed

- **Facilities:**
 - Restaurants & Bars: 0 restaurant and 1 bar
 - Meeting Rooms : N/A

- **Transportation:**
 - Closest Bus/Tram stop: Cornavin (Bus 5 or train)



Room Type	22, 23 & 24 May 2017		19, 20, 21 & 25 May 2017		Breakfast	City Tax Rate	MAP	Distance to Palexpo (public transportation)	Driving Distance to Palexpo
	SINGLE RATE	DOUBLE RATE	SINGLE RATE	DOUBLE RATE					
Standard Room	CHF 290	CHF 290	CHF 140	CHF 140	Included	Included	20	10 min	10 min

GENÈVE AÉROPORT APPART'CITY CONFORT

- 3 ★ - AIRPORT AREA (FR)

- **Room Type:**
 - Standard Room – 24sqm with bath and double or twin bed

- **Facilities:**
 - Meeting Rooms : 1 meeting room for a total of 200sqm of meeting space

- **Transportation:**
 - Closest Bus/Tram stop: Ferney, Avenue du Jura (Bus Y)



Room Type	22,23 & 24 May 2017		19,20,21 & 25 May 2017		Breakfast	City Tax Rate	MAP	Distance to Palexpo (public transportation)	Driving Distance to Palexpo
	SINGLE RATE	DOUBLE RATE	SINGLE RATE	DOUBLE RATE					
Standard Room	EUR 259	EUR 259	EUR 129	EUR 129	EUR 13.50	EUR 0.99	30	20 min	7 min

• **Room Type:**

- Standard Room - 21sqm with bath and 160x200cm bed

• **Facilities:**

- Restaurants & Bars: 2 restaurants and 1 bar
- Meeting Rooms : 4 meeting space for a total of 340sqm of meeting space

• **Transportation:**

- Closest Bus/Tram stop: Grand-Hangar (Bus 23 then Bus 5)



Room Type	22, 23, 24 & 25 May 2017		19, 20 & 21 May 2017		Breakfast	City Tax Rate	MAP	Distance to Palexpo (public transportation)	Driving Distance to Palexpo
	SINGLE RATE	DOUBLE RATE	SINGLE RATE	DOUBLE RATE					
Standard Room	CHF 270	CHF 270	CHF 165	CHF 165	Included	CHF 3.30	21	10min	5 min


HOSTELLERIE DE LA VENDEE- 3 - SUB-CITY

- **Room Type:**
 - Standard Room -

- **Facilities:**
 - Restaurants & Bars: 1 restaurant
 - Meeting Rooms : N/A

- **Transportation:**
 - Closest Bus/Tram stop: Lancy-Pont-rouge (Tram 14 then Bus 5)



Room Type	19 to 26 May 2017		Breakfast	City Tax Rate	MAP	Distance to Palexpo (public transportation)	Driving Distance to Palexpo
	SINGLE RATE	DOUBLE RATE					
Standard Room single use only	CHF 170	-	Included	CHF 3.30		38 minutes	16 minutes
Standard Room	CHF 240	CHF 260					

LES NATIONS – 3 – CITY CENTER

- **Room Type:**
 - Standard Room - 20sqm with bath and 160x200cm bed

- **Facilities:**
 - Restaurants & Bars: N/A
 - Meeting Rooms : N/A

- **Transportation:**
 - Closest Bus/Tram stop: Vidollet



Room Type	22, 23 & 24 May 2017		19, 20, 21 & 25 May 2017		Breakfast	City Tax Rate	MAP	Distance to Palexpo (public transportation)	Driving Distance to Palexpo
	SINGLE RATE	DOUBLE RATE	SINGLE RATE	DOUBLE RATE					
Standard Room	CHF 290	CHF 290	CHF 140	CHF 140	Included	Included	22	15 min	8 min

MON REPOS - 3★ - CITY CENTER

- **Room Type:**

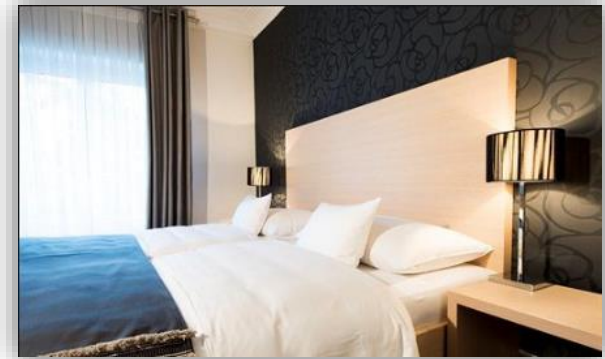
- Standard Room - 22sqm with bath and 160x200cm bed

- **Facilities:**

- Restaurants & Bars: 0 restaurant and 1 bar
- Meeting Rooms : 2 meeting rooms for a total of 100sqm of meeting space

- **Transportation:**

- Closest Bus/Tram stop: France (Tram 15 then Bus 5)



Room Type	22, 23, 24 & 25 May 2017		19, 20 & 21 May 2017		Breakfast	City Tax Rate	MAP	Distance to Palexpo (public transportation)	Driving Distance to Palexpo
	SINGLE RATE	DOUBLE RATE	SINGLE RATE	DOUBLE RATE					
Standard Room	CHF 250	CHF 275	CHF 200	CHF 200	CHF 19,50	CHF 3.30	24	35 min	8 min

RAMADA ENCORE - 3[★] - SUB-CITY

- **Room Type:**
 - Standard Room - 24sqm with bath and 160x200cm bed
- **Facilities:**
 - Restaurants & Bars: 1 restaurant and 1 bar
 - Meeting Rooms : 2 meeting rooms for a total of 1650sqm of meeting space
- **Transportation:**
 - Closest Bus/Tram stop: Stade de Genève (Bus D or Bus 4 then Bus 5)



Room Type	22, 23, 24 & 25 May 2017		19, 20 & 21 May 2017		Breakfast	City Tax Rate	MAP	Distance to Palexpo (public transportation)	Driving Distance to Palexpo
	SINGLE RATE	DOUBLE RATE	SINGLE RATE	DOUBLE RATE					
Standard Room	CHF 275	CHF 275	CHF 175	CHF 175	CHF 25	CHF 3.30	25	35 min	10 min

LE LIDO - 2★ - CITY CENTRE

- **Room Type:**
 - Standard Room - 16sqm with bath and 160x200cm bed

- **Facilities:**
 - Restaurants & Bars: 0 restaurant and 1 bar
 - Meeting Rooms : N/A

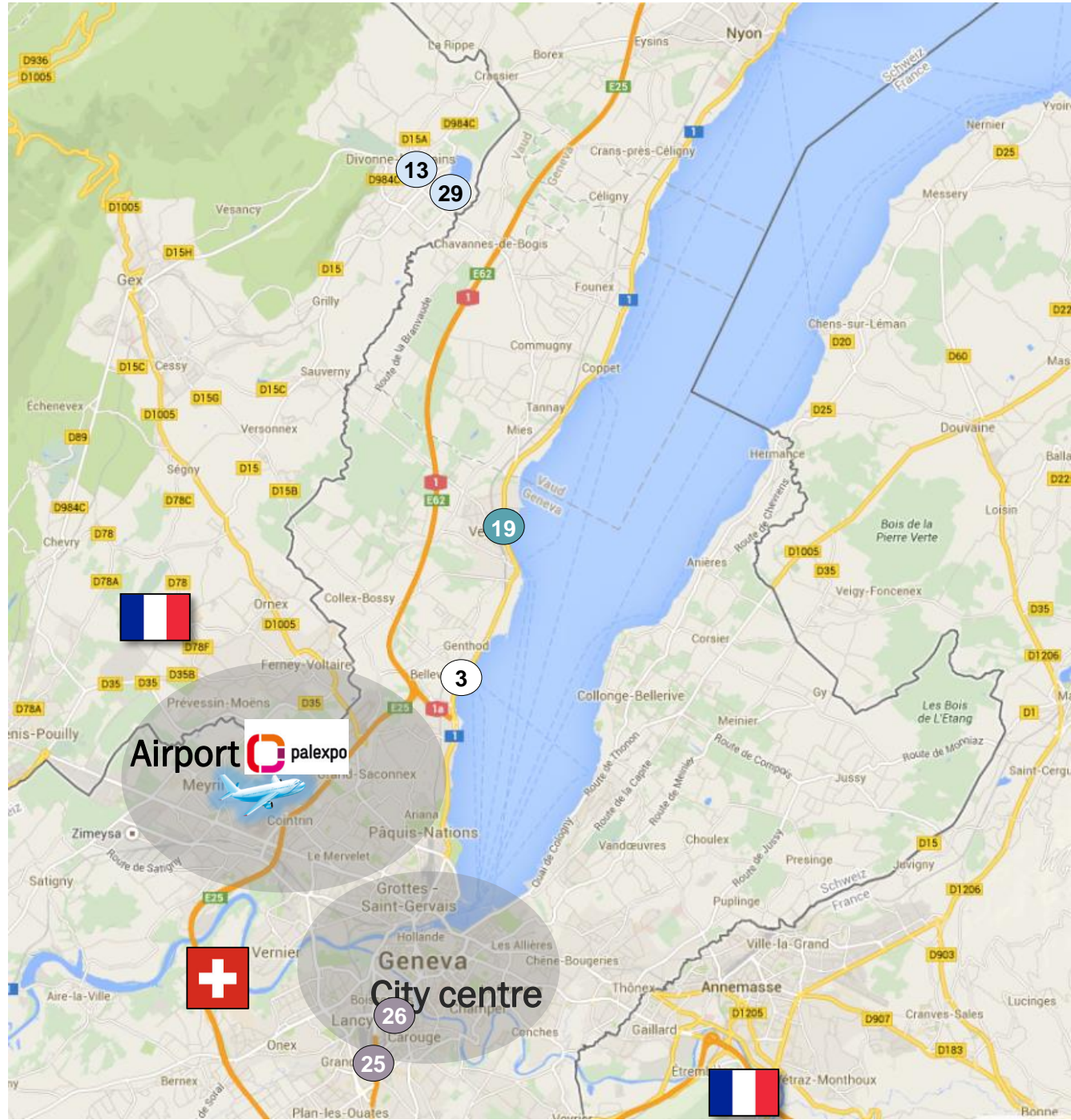
- **Transportation:**
 - Closest Bus/Tram stop: Cornavin (Bus 5 or train)



Room Type	19 to 26 May 2017		Breakfast	City Tax Rate	MAP	Distance to Palexpo (public transportation)	Driving Distance to Palexpo
	SINGLE RATE	DOUBLE RATE					
Standard Room	CHF 175	CHF 195	Included	Included	28	10 min	10 min

MAP OVERALL

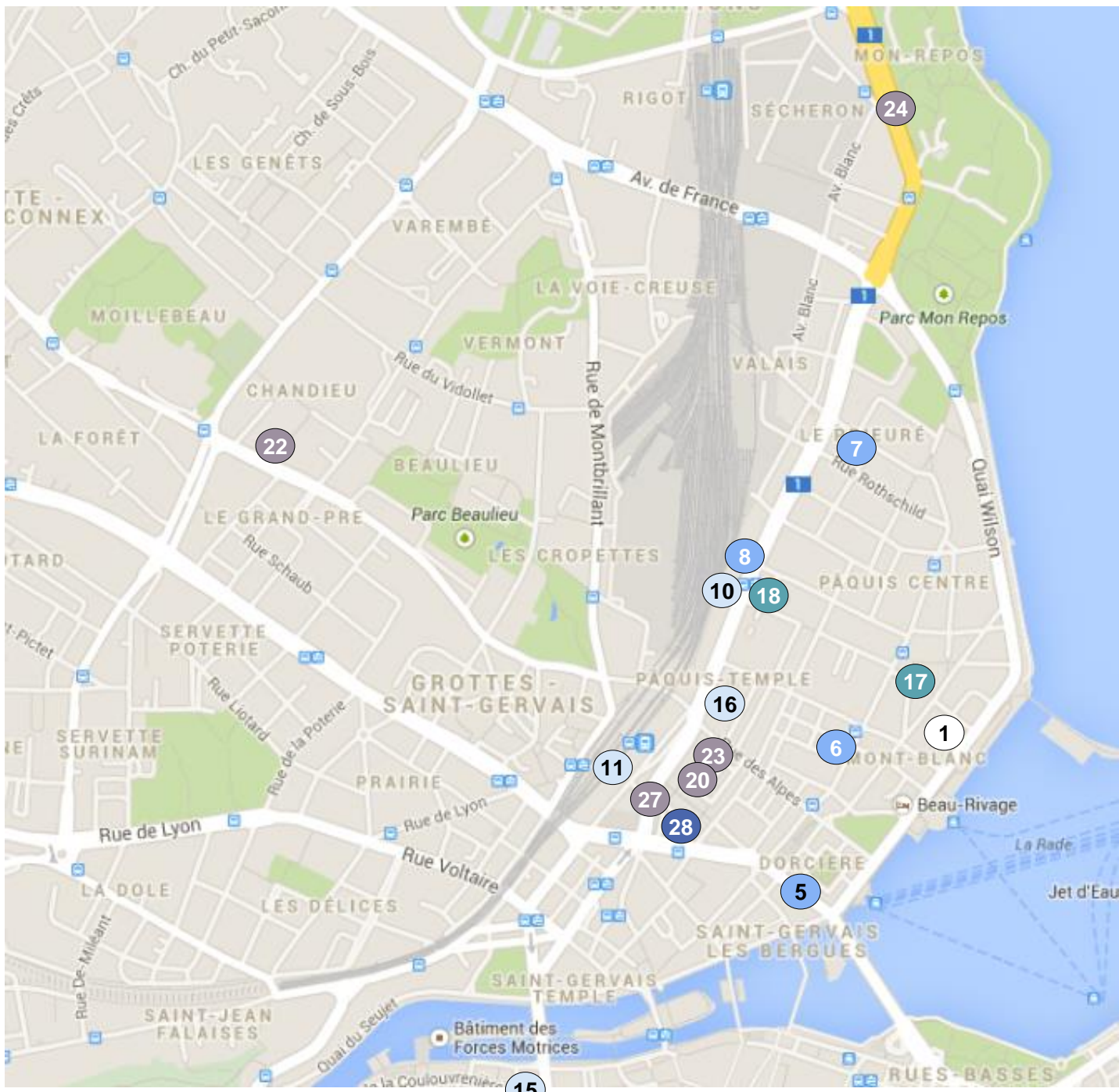
	5 STAR HOTELS
	4 STAR SUP HOTELS
	4 STAR HOTELS
	3 STAR SUP HOTELS
	3 STAR HOTELS
	2 STAR HOTELS
	1 STAR HOTELS



HOTEL NAME	NUMBER ON MAP
DOMAINE DE DIVONNE	13
APPART'CITY CONFORT GENEVE DIVONNE-LES-BAINS	29
LA RÉSERVE	3
LAKE GENEVA HOTEL	19
RAMADA ENCORE	25
HOSTELLERIE DE LA VENDEE	26

CITY CENTRE

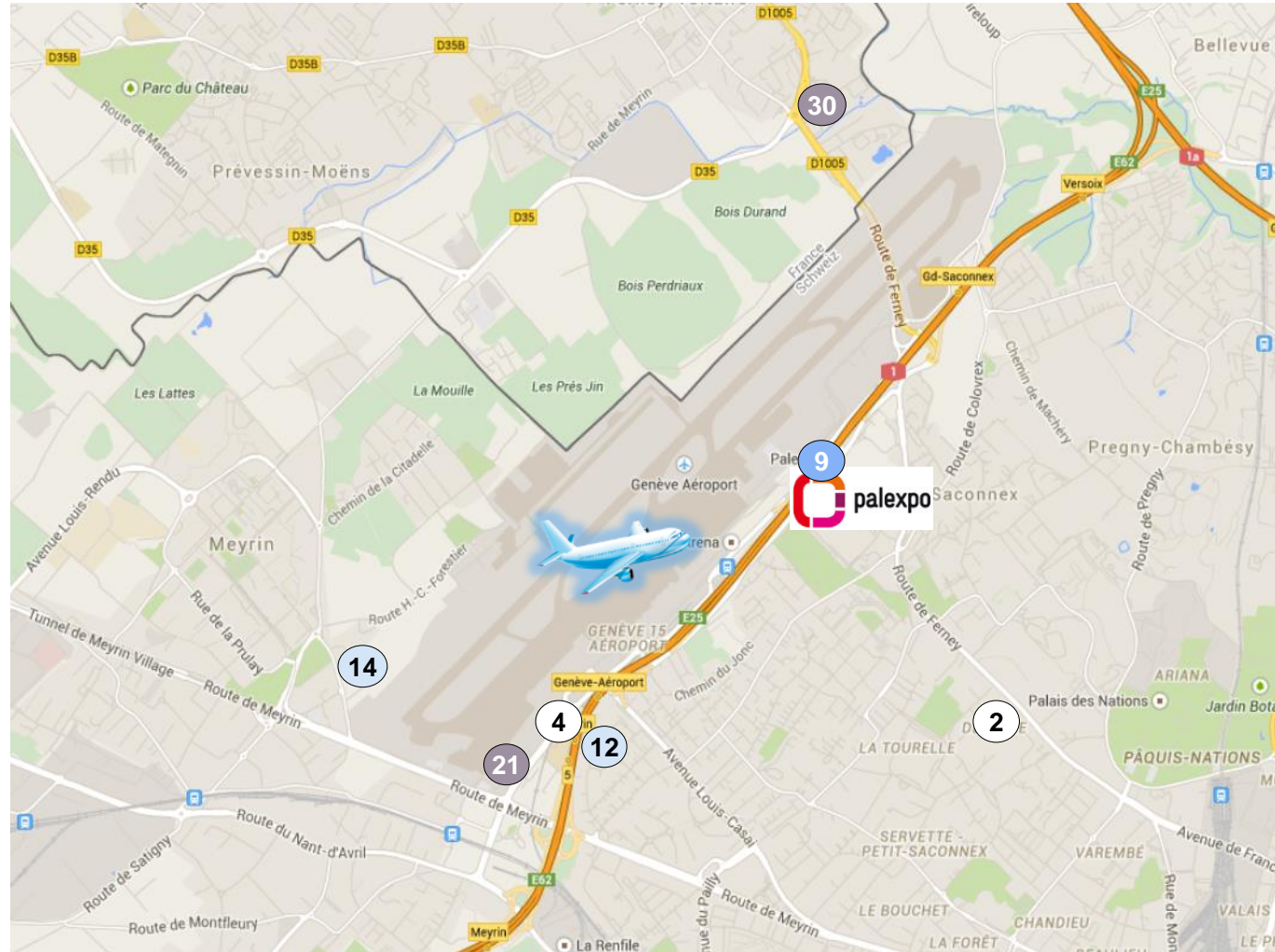
	5 STAR HOTELS
	4 STAR SUP HOTELS
	4 STAR HOTELS
	3 STAR SUP HOTELS
	3 STAR HOTELS
	2 STAR HOTELS
	1 STAR HOTELS



HOTEL NAME	NUMBER ON MAP
ASTORIA	27
AUTEUIL MANOTEL	10
BEST WESTERN HOTEL STRASBOURG	23
BRISTOL	5
CORNAVIN	11
CRISTAL	20
EASTWEST	6
EDELWEISS MANOTEL	17
GRAND HOTEL KEMPINSKI	1
KIPLING MANOTEL	18
LE LIDO	28
LES NATION	22
MON REPOS	24
N'vY MANOTEL	7
ROYAL MANOTEL	8
TIFFANY	15
WARWICK	16

AIRPORT / PALEXPO

	5 STAR HOTELS
	4 STAR SUP HOTELS
	4 STAR HOTELS
	3 STAR SUP HOTELS
	3 STAR HOTELS
	2 STAR HOTELS
	1 STAR HOTELS



HOTEL NAME	NUMBER ON MAP
CROWNE PLAZA	12
HOLIDAY INN EXPRESS GENEVA AIRPORT	21
GENÈVE AÉROPORT APPART'CITY CONFORT	30
INTERCONTINENTAL	2
NH GENEVA AIRPORT	14
MOVENPICK HOTEL & CASINO	4
STARLING	9